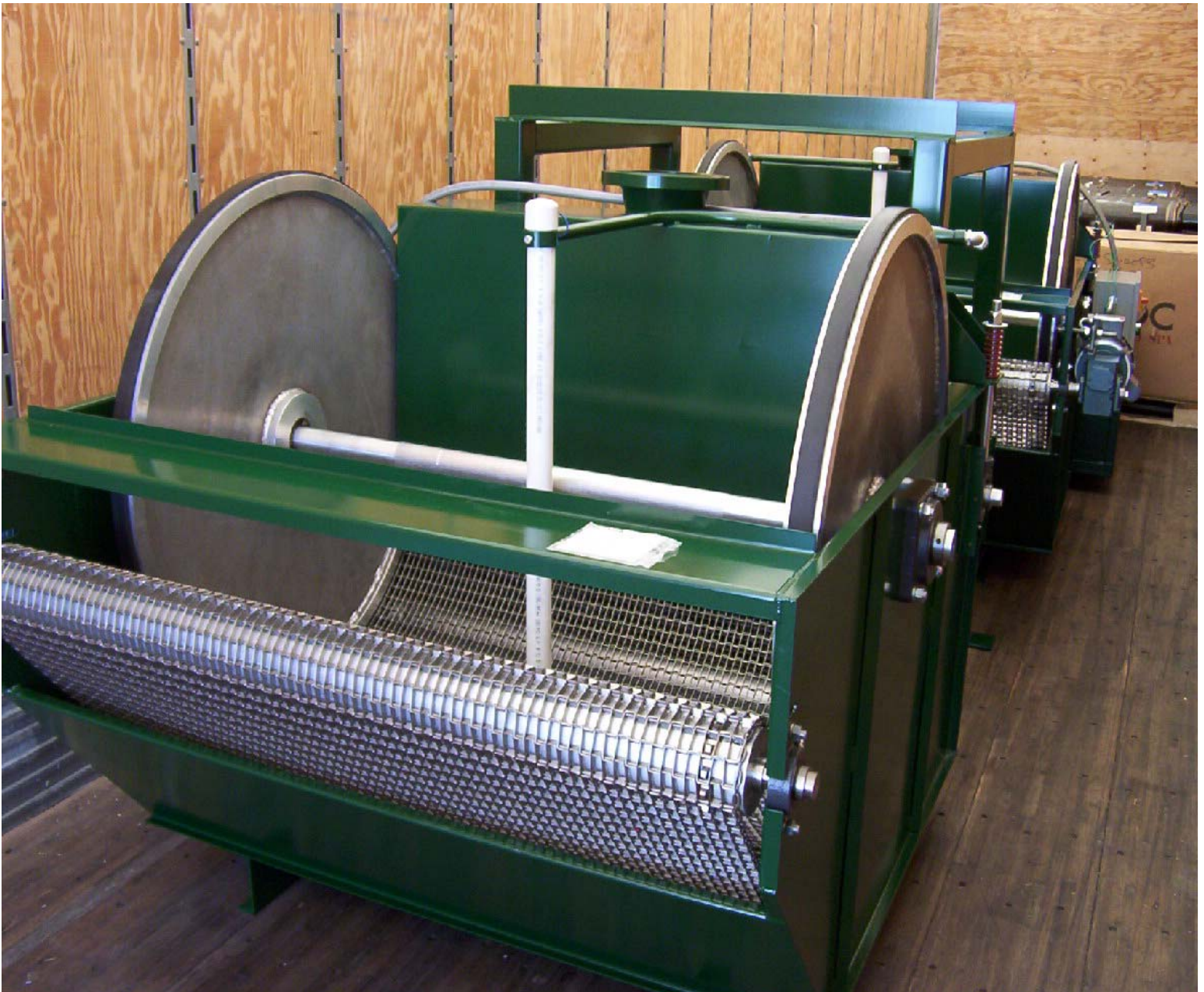


Clearstream Filters Inc.

The Clear "Solution" to any Solution!



MYCO MEDIA FILTER

The leading Edge in Filtration Technology
FOR REMOVAL OF SOLIDS FROM PROCESS LIQUIDS



FEATURES



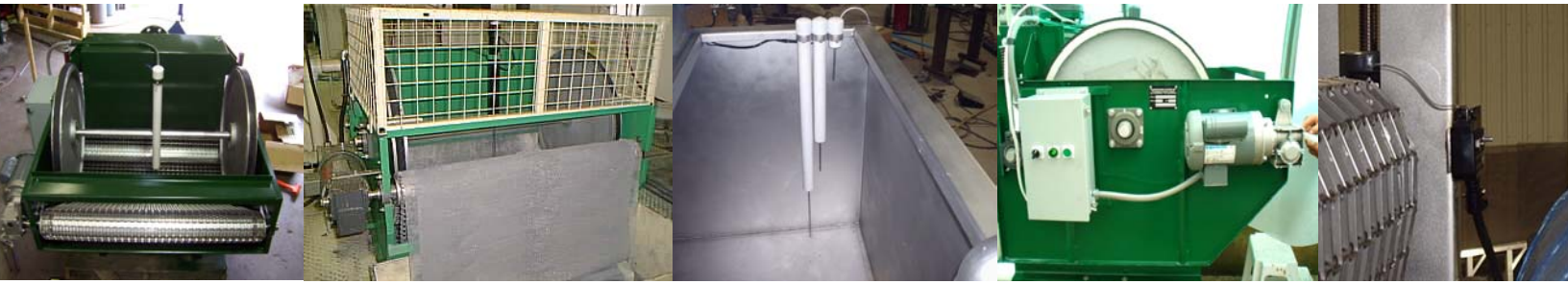
The **MYCO** media filter provides a highly efficient and reliable means of removing solids from process liquids. The **MYCO** media filter is a non pressurized system which is economical and easy to operate. It can handle occasional system upsets or overloads without blinding the filter media.

The **MYCO** media filter is a fully automatic system that ensures efficient cleaning of any process fluid. It optimizes the amount of media used at the same time. The solids are discharged as a cake for easy handling and disposal.

The innovative compact design of the **MYCO** Media filter allows for easy integration into
The following:

- Newly designed equipment
- Existing equipment
- O.E.M. systems





TYPICAL APPLICATION

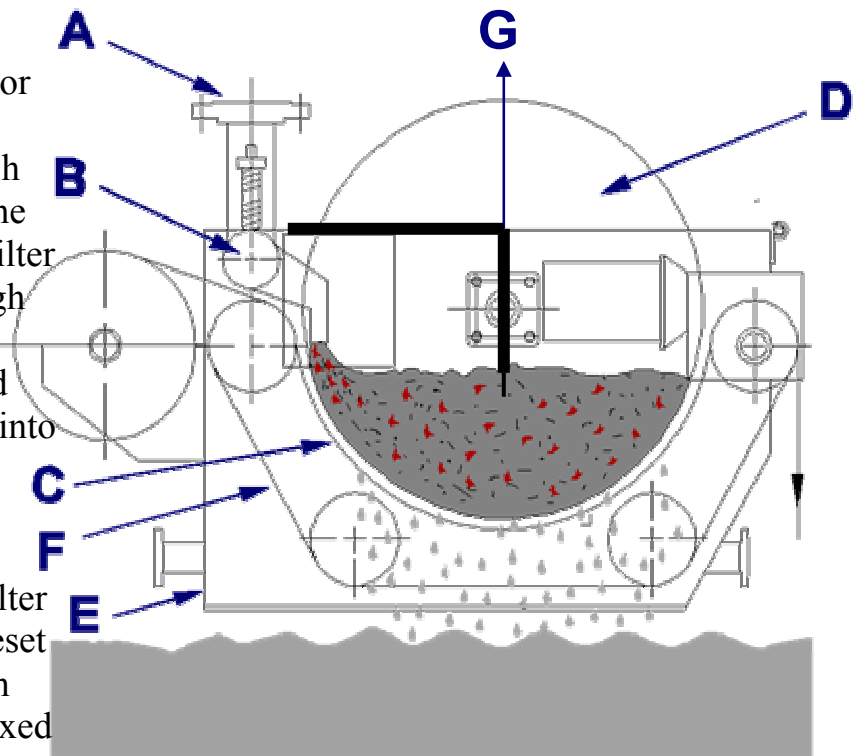
Floor Floors	Trough Irrigation	Pond Source Water
Agriculture	Cooling & Heating	Contaminated Well Water
Food & Beverage	Machine Automation	Water & Wastewater
Scrubbers	Parts Washing	Floor Benches (Ebb and flow irrigation)

PRINCIPAL OF OPERATIONS

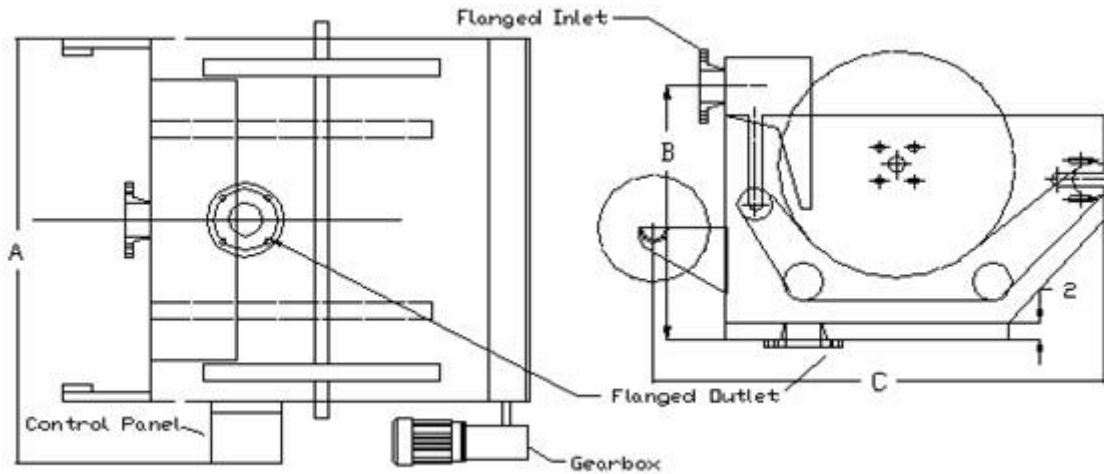
A motor driven metal conveyor (F) is used to carry filter media (C) and to form a trough between two wheel discs (D).

The liquid to be filtered is pumped or gravity fed into inlet (A). It is then distributed to the headbox (B) which slows the velocity and discharges the liquid over the entire width of the filter media (C). The liquid passes through the filter media, leaving the solids on the filter media. The clean liquid is discharged through an outlet (E) into a tank or discharged into an open system.

As the solids are collected on the filter media, the liquid level rises to a preset level. A level sensor (G) initiates an index cycle and fresh media is indexed displacing a portion of the spent media. The spent media is then discharged to waste.



SPECIFICATIONS



MODEL	A	B	C	FLOW (USGPM)
MMF 18-27	30	37	43.25	100
MMF 27-27	40	34.25	52.75	200
MMF 27-39	52	34.25	52.75	300
MMF 27-51	64	34.25	52.75	400
MMF 27-60	73	34.25	52.75	500
MMF 39-39	52	41.75	65.75	450
MMF 39-51	64	41.75	65.75	600
MMF 39-60	73	41.75	65.75	750
MMF 39-70	83	41.75	65.75	900

Dimensions are in inches.

Flow rate is based on water using 0.8oz media.

Specifications:

Carbon Steel Construction, Polyester Powder Coated
 Conveyor Belt- 304 Stainless Steel
 Seal Rings- Neoprene
 Seal Wheels-Aluminum

Options:

Cover
 Spent Media Windup
 All Stainless Steel Construction or to Supplied Specifications
 Custom Designed to suit application

Clearstream Filters Inc.

57 Arnold Sayeau Drive
 Delhi, ON N4B 2W9
 Tel. (519) 582-8446
 Fax (519) 582-1936
www.clearstreamfilters.com

GREENHOUSE

